



Airowear Head Office Aydon South Farm, Aydon,
Corbridge, Northumberland, NE45 5PL
Tel: 01434 632816 Fax: 01434 632849
Email: enq@airowear.co.uk

www.airowear.co.uk



the Reiver

The Reiver Elite body protector is a stylish unisex tabard ideal for children, men and women. The strength of the Reiver Elite as a style comes from its ease of fitting and the availability of over 80 sizes to ensure a superb fit for all body shapes and sizes.

- Over 80 standard sizes includes 4 different back lengths and 2 width fittings to achieve a "fit for all"
- Tabard style makes the Reiver Elite ideal for children because it is simple to fit and soft wear
- Separate shoulder and waist fastenings
- Additional safety belt secures waist fastening
- Easy-to-use red visual fit indicator – If red Velcro is visible once the body protector is fastened, the body protector is too small
- Incorporates Ultraflex foam technology to make it incredibly soft and pliable without relying on body heat
- Combined with body heat, the Reiver becomes even more flexible and comfortable to wear
- Removable cover for washing protectors
- Option to attach matching shoulder protectors
- Accessorised with Colour Swap for contrasting colours
- Bespoke sizes available



visual fit indicators



Reiver size chart

SIZE	CHEST	WAIST	OVER SHOULDER			BACK LENGTH						
			XSHORT	SHORT	REGULAR	LONG	XSHORT	SHORT	REGULAR	LONG		
CHILDREN'S												
COXS	52-58	50-56	41-49	44-52	48-56	54-62	28	30	34.5	37.5		
COXS WW	52-58	52-58	41-49	44-52	48-56	54-62	28	30	34.5	37.5		
CS	54-60	52-58	44-52	48-56	54-62	60-68	30	34.5	37.5	40.5		
COXS WW	53-63	56-64	44-52	48-56	54-62	60-68	30	34.5	37.5	40.5		
CS	60-66	56-64	48-56	54-62	60-68	66-74	34.5	37.5	40.5	43.5		
CS WW	63-69	62-70	48-56	54-62	60-68	66-74	34.5	37.5	40.5	43.5		
CM	66-72	62-70	54-62	60-68	66-74	72-79	37.5	40.5	43.5	46.5		
CM WW	69-75	64-72	54-62	60-68	66-74	72-79	37.5	40.5	43.5	46.5		
CL	72-78	64-72	60-68	66-74	72-79	77-85	40.5	43.5	46.5	50		
CL WW	75-81	66-74	60-68	66-74	72-79	77-85	40.5	43.5	46.5	50		
CLL	78-84	66-74	66-74	72-79	77-85	83-91	43.5	46.5	50	53		
CLL WW	81-87	68-78	66-74	72-79	77-85	83-91	43.5	46.5	50	53		
ADULTS												
AXS	84-90	68-78	72-79	77-85	83-91	89-97	46.5	50	53	56.5		
AXS WW	83-93	74-84	72-79	77-85	83-91	89-97	46.5	50	53	56.5		
AS	90-96	74-84	77-85	83-91	89-97	94-102	50	53.5	56.5	59.5		
AS WW	89-99	80-90	77-85	83-91	89-97	94-102	50	53.5	56.5	59.5		
AM	96-102	80-90	83-91	89-97	94-102	98-108	53.5	56.5	59.5	62		
AM WW	95-105	86-96	83-91	89-97	94-102	98-108	53.5	56.5	59.5	62		
AL	102-108	86-96	89-97	94-102	98-108	102-112	56.5	59.5	62	64.5		
AL WW	105-111	92-102	89-97	94-102	98-108	102-112	56.5	59.5	62	64.5		
AXL	108-114	92-102	94-102	98-108	102-112	108-118	59.5	62	64.5	66.5		
AXL WW	111-117	102-112	94-102	98-108	102-112	108-118	59.5	62	64.5	66.5		

All sizes are shown in cm



FEEL LIKE CHANGING YOUR BODY PROTECTOR? THEN SWAP IT!!

Swap your XC colours and brighten up your Reiver Elite body protector with Airowear's Colour Swap

Colour Swap is the only XC silk designed so you can quickly and easily customise your tabard body protector. Colour Swap is designed to make it possible for fashion-conscious riders to quickly and simply update their safety gear to suit different riding disciplines, conditions and events.

When worn over the Reiver body protector, Colour Swap will boost your safety appearance and bring an element of fashion and colour to an otherwise plain coloured garment, and because the cover is a silk, it can easily be removed for when you need a plain coloured body protector for pony club and riding club activities.

As well as making daily colour changes to match your horse, jodhpurs, hat or friends, you can also use Colour Swap to mix 'n' match colours with your stable pals or make up your own colour co-ordinations by wearing one colour on the front and another colour on the back.

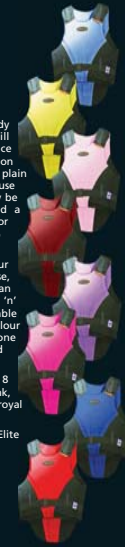
Colour Swap is available in 8 colours; bubble pink, pale pink, lilac, sky blue, yellow, red, royal blue and wine.

To fit the Airowear Reiver Elite Body Protector:

Small = COXS - CM

Medium = CL - AS

Large = AM - AXL



airowear
PERFORMANCE PROTECTION

**AIROWEAR
BODY PROTECTOR
FITTING GUIDE**

Stylish *flexible* protection
LEADING THE WAY IN EQUESTRIAN SAFETY



Stylish *flexible* protection

Maximum protection without restricting movement

A PERFECT FIT FOR EVERYONE

In today's market, there is no excuse why everyone, regardless of height, width, shape or size should not be able to purchase a correctly fitted body protector. Airowear ensure that every rider can be fitted into one of their tailored body protectors by offering a wide choice of styles and fittings to suit all body shapes and sizes. Follow this guide to ensure the style you have chosen is correctly fitted.

SAFETY STANDARDS

All Airowear body protectors conform to the European Standard EN13158:2000 and are CE marked to show their confirmation to the PPE Directive 89/686/EEC. In addition, they are all annually retested to conform to the highest level of protection; BETA 2000: Level 3.

WHAT IS PROTECTED?

Airowear's body protectors are designed to absorb impact, which in the event of an accident, should reduce the severity of rib fractures, bruising and significant soft tissue injuries. It is important to note that body protectors do not offer spinal protection or prevent injuries involving severe torsion, flexion, extension or crushing of the body.

SHOULDER PROTECTION

All styles of Airowear body protectors come with the option of detachable shoulder protectors except for the Zippa Plus where they form part of the garment. Wearing shoulder protectors can reduce the likelihood of injury to the shoulder or collar bone area by up to 30%.



ergonomically designed for freedom of movement

Gap FREE Flexibility

Breaking the concept that single-panelled body protectors are rigid, inflexible and uncomfortable; Airowear introduce **ULTRAFLEX TECHNOLOGY**

Airowear's body protectors use the latest hi-tech materials which absorb and spread impact, thereby lessening the injury sustained from a fall or kick.

The use of Ultraflex technology allows the wearer to benefit from the thinnest possible shock absorbing materials without compromising on protection or comfort.

High density, perforated, PVC Nitrite foam is used in all of Airowear's styles to maximise flexibility and airflow, helping to keep the rider cool and comfortable.



ergonomically designed for freedom of movement

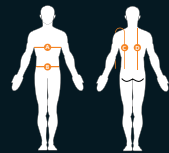
Ultraflex Technology is now incorporated into the Contour and Reiver styles and is cleverly structured so the body protector spreads around the torso, making it mould comfortably to the contours of the body.

What is Heat Transfer Technology? Heat Transfer Technology relates the length of time it takes for shock absorbing materials to become pliable with heat transferred from the body.

Traditionally, it can take up to 10 minutes for a body protector to heat up before it becomes more pliable. Airowear's technology, combined with heat sensitive materials, absorb the heat much faster than traditional formulations. Added to Ultraflex Technology, this results in arguably the most flexible and comfortable single-panelled body protector on the market.

Why Perforations? Airowear perforate their materials as much as possible without losing any of the impact absorption. This has the joint benefit of further improving the flexibility of the body protector while providing maximum airflow and ventilation to the rider.

Airowear's combination of Ultraflex technology, lightweight and perforated materials create the ultimate comfort in body protection.



DIMENSION A - Chest
DIMENSION B - Waist
DIMENSION C - Over shoulder
DIMENSION D - Back length



6 steps to a perfect fit

Step 1: A body protector should be fitted over light clothing. Heavier garments are best worn over the top.

Step 2: Take your a) chest, b) waist, c) over-the-shoulder (waist-to-waist) and d) back length measurements in cm, then find your size using the charts within your chosen style. A better ladies fit may be achieved by choosing one size smaller than your actual chest measurement.

Step 3: Before trying on, loosen the chest and waist fastenings and flex the foam.

Step 4: Fasten at the waist and chest, ensuring the visual fit indicators are covered and there is enough room for adjustment (red Velcro for Reiver and grey stitch lines for Zippa & Contour)

Step 5: Once the body protector fits securely around the chest and waist choose the length appropriate to your height. The shoulders and neckline should lie flat against the body. If this cannot be achieved, you may need a shorter length.

Step 6: Check the back length by sitting on a saddle and simulating all riding positions. At the back, the body protector should sit approximately a hand's width between the saddle and base of the garment. At the front, the body protector should reach your breast bone and cover your bottom rib at mid-chest by 25mm (see diagram at point c)

the Outlyne

Designed for females of all shapes and sizes, the Outlyne is the latest body protector from Airowear. It has been developed through the culmination of years of scientific research into how a body protector should fit the female body shape. The Outlyne combines maximum protection and unrestricted movement with a perfect fit and super soft flexibility.

- A close and comfortable fit follows the contours of the female figure
- Scientifically manufactured to correlate proportions with height
- Separate chest, waist and shoulder fastenings for essential adjustability
- Angled straps pull the garment in close to the body for maximum comfort
- Tapered foam for a tailored finish
- Darted foam across the chest support provides comfort around the bust without compressing the body
- Ultraflex technology makes the Outlyne incredibly soft without relying on heat transfer from the body
- Combined with body heat, the Outlyne becomes even more flexible
- Option to attach shoulder protectors
- Visual fit indicators

SIZE	CHEST	WAIST	OVER SHOULDER (OS)		
			SHORT	REGULAR	LONG
T2 SLIM	73-80	65-75			
T2	77-84	69-78			
L3	80-88	71-81			
L3	88-92	74-84	OS 73-81	OS 79-87	OS 85-93
L4 SLIM	88-96	78-88	BA 47	BA 50	BA 53
L4	91-100	82-92			
L5 SLIM	96-105	86-96	HEIGHT	HEIGHT	HEIGHT
L5	100-110	90-100	146-162	158-174	166-182
L6	110-120	98-110			
L7	120-132	108-120			

All sizes are shown in cm



the Zippa

The original zip-fronted body protector, the Zippa is designed to offer maximum protection with a superb, tailored fit for men, children and women.

- Zippa Dynamic is designed specifically for men with a generous cut over the shoulders to provide comfort and freedom of movement whilst styled with masculine lines
- Zippa Sport is designed specifically for women with graduated and darted foam across the chest to provide comfort around the bust
- Zippa Junior is the unisex version tailored for the junior figure
- Zippa Plus has built in shoulder protectors offering ultimate protection without adding bulk
- Offered in over 60 standard sizes, including 3 back lengths to achieve a "fit for all"
- Separate chest, waist and shoulder fastenings
- Option to attach shoulder protectors
- Visual fit indicator
- Bespoke sizes and XC colours available



SIZE	CHEST	WAIST	OVER SHOULDER			BACK LENGTH		
			SHORT	REGULAR	LONG	SHORT	REGULAR	LONG
JUNIOR'S								
J1	66-72	62-70	55-59	61-69	67-75	38	41	44
J2	72-78	64-72	61-69	67-75	73-81	41	44	47
J3	78-84	66-74	67-75	73-81	79-87	44	47	50
WOMEN'S								
W3 SLIM	81-87	67-75	73-81	79-87	83-91	44	47	50
W3	84-90	68-76	73-81	79-87	83-91	47	50	52
W4 SLIM	87-93	71-79	79-87	83-91	87-95	47	50	52
W4	90-96	74-84	79-87	83-91	87-95	50	52	53.5
W5 SLIM	93-99	76-86	83-91	87-95	91-99	50	52	53.5
W5	96-102	80-90	83-91	87-95	91-99	52	53.5	55
W6	102-108	86-96	87-95	91-99	95-103	53.5	55	58
MEN'S								
M3	84-90	74-84	82-90	86-94	90-98	51	53	55
M4	90-96	80-90	86-94	90-98	94-102	53	55	57.5
M5	96-102	86-96	90-98	94-102	98-106	55	57.5	59.5
M6	102-108	92-102	94-102	98-106	102-110	57.5	59.5	62.5

All sizes are shown in cm